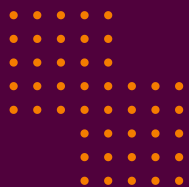




ANNUAL ACTIVITY REPORT 2025

FOR ENQUIRIES: 0552232227 / 0302452220
EMAIL: info@seghana.net
FACEBOOK: Social Enterprise Ghana
LINKED-IN: Social Enterprise Ghana
INSTAGRAM: Socialenterpriseghana
GOOGLE: SE Ghana
WEBSITE: Seghana.net
TWITTER: SE Ghana



EXECUTIVE DIRECTOR'S SPEECH

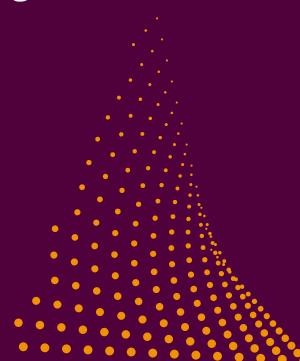
Good morning and welcome to the 6th edition of Ghana Social Enterprise Forum, an event to celebrate the work and impact of social entrepreneurs, women entrepreneurs, entrepreneurs who are persons with disabilities, entrepreneurs who are refugees, and young entrepreneurs across the country.

The Minister of Communication, Digitalization and Innovation, Hon. Sam Nartey George, Directors and staff of various government agencies, government representatives, the Chair and members of the Social Enterprise Ghana board, partners and investors, friends from the media and academia, distinguished social entrepreneurs and hub leaders, we are happy to have you here today.

This year's event on the theme "Smart Impact: Leveraging Technology to Accelerate Social Innovation" is a platform for us to learn, explore, and take advantage of the new opportunities that digital platforms and technologies provide. For social entrepreneurs to make impact and promote shared prosperity, we need to take advantage of the various technologies, including Artificial Intelligence, Blockchain, Cybersecurity, Internet of Things, Quantum Physics, and many more, necessary to leapfrog the barriers necessary for promoting inclusive growth and advance social innovation and address our teething challenges of poverty, lack, and food insecurity.

We acknowledge the government's efforts in supporting entrepreneurs and small business owners, and supporting young people and underserved communities through its initiatives like the One Million Coders Programme, Adwumawura, National Apprenticeship Programme (NAP), 24 Hour Economy, Nkoko Nkitinkiti, Big Push, and many others. For us in the social enterprise community, we urge the government to develop more inclusive initiatives and policies that support the many social entrepreneurs, persons with disabilities, young and female entrepreneurs, and persons who are displaced. We recommend the Ghana Social Enterprise Policy, the Ghana Social Enterprise Fund, the Start Up and Innovation Bill, Start Up Equipment Financing Policy, Ghana Social Procurement Bill, and the Inclusive Agribusiness Policy.

Distinguished ladies and gentlemen, events and platforms like this afford us the stage to say 'Thank You' to partners and organisations that have supported us over the years. We thank World University Services of Canada (WUSC Ghana), through whose support under the ACTIVATE Project, we are providing vocational, entrepreneurship, and job promotion opportunities to young people across the country. We thank the GIZ PEI Project and KfW-African Union Skills Initiative for Africa Projects for supporting us in promoting digital, e-commerce, and green skills among young female entrepreneurs.



EXECUTIVE DIRECTOR'S SPEECH

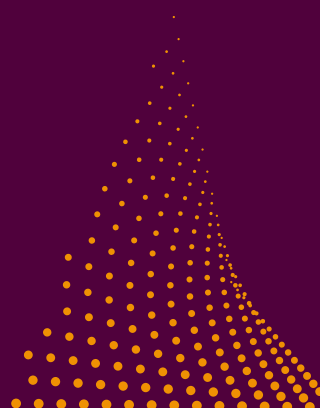
We are grateful to Accra Technical University, KPMG, Amahoro Coalition, European Union and SNV 2SCALE for promoting business and entrepreneurship skills among our members and young people. And of course, to Star Ghana Foundation and WACSI for their generous support in organising this event, and also providing technical support and professional development for the team at Social Enterprise Ghana.

For this year's Ghana Social Enterprise Forum, we will take Partner Goodwill messages, Keynote and Guest Speeches, we will have Panel Discussions on various topics from Transformational Technologies to Promoting Technologies and Making Technologies inclusive, and presentations on AI for Social Good, and many more. There will be exhibitions of various products and services of members, and as usual, Dealrooms and presentations from financial service providers.

As social innovators, the time for us to be at the forefront of social innovation, impact, and transformational change is now. Our country and generation need impact entrepreneurs, social entrepreneurs, and innovators that have solutions to take 20-100 million people out of poverty, address poor road networks, promote good health, develop social housing solutions, and provide decent, dignified, and fulfilling jobs for our young people. We salute the pioneering work of many in the digital and technology space, including Dr. Prince Kofi Kludjeson, Dr. Nii Quaynor, Herman Chinery Hesse, Dr. Thomas Mensah, Estelle Akofio Sowah, Lucy Quist, Patricia Obo Nai, Yvette Atekpe, Rosy Fynn, Angela Kyerematen-Jimoh, and many others, making waves to promote inclusive technologies to many underserved communities. Kudos to the many social entrepreneurs making a difference in their communities-Soronko Academy, Food for All Africa, Nneka Foundation, Farmerline, Grow For Me, IOT Network, Duapa Werkplace, Zaacoal, Ifok, MPharma, SG Mobile Clinic, and the many others promoting significant impact in their communities.

Distinguished social entrepreneurs, friends, and partners of the social enterprise ecosystem, welcome again to the Ghana Social Enterprise Forum 2025. We urge you to celebrate, engage, network, and create impact.

Thank you, and may God bless us



ABOUT SOCIAL ENTERPRISE GHANA



Social Enterprise Ghana (SE Ghana) is the national network for high-impact social entrepreneurs, hubs, accelerators, impact investors, and enterprise support organizations in Ghana.

Social Enterprise Ghana has a current membership of about 900 organizations operating in diverse sectors of climate-smart agribusiness, circular economy, health services, inclusive financial services, TVET, and education.

SE Ghana advocates for business-friendly policies for social enterprises and supports members with training, research, access to skills, access to the market, access to technology and access to finance.

WHO WE ARE

OUR MISSION

To advocate for business-friendly environment for social enterprises and support the development of a strong social enterprise ecosystem through training, research, access to skills and talent, access to market, access to technology and access to finance.

OUR VISION

To see a strengthened social enterprise ecosystem in Ghana for shared prosperity and impact.

KEY ACTIVITIES

TRAINING AND CAPACITY BUILDING

We organize events and training programs which are centered around improving startups and entrepreneurs as well as equipping the youth and vulnerable with skills to start their business

INNOVATION & LEARNING EVENTS

Connect social entrepreneurs to learn from each other's experiences and partner in scaling their innovations through country and regional face-to-face meetings and an on-line network

ADVOCACY

Build awareness and advocate for policies and programs that promote social entrepreneurs by drawing investors, government and other stakeholders

ACCESS TO MARKET AND FINANCE

Fundraise for early stage social entrepreneurs locally and internationally to fill in the funding gap and build a portfolio of sustainable social ventures. Social enterprise Ghana also increase market access among their beneficiaries by providing them with advice and training, as well as, direct access to customers.

RESEARCH

Conduct research to broaden understanding of the social enterprise landscape nationally and tell the stories and aggregate the impact of social entrepreneurs

POLICY

Build awareness and advocate for policies and programs that promote social entrepreneurship by drawing in funders, government and other stakeholders



OUR CURRENT STATE

1,250

MEMBERS

52

PROJECT
PARTNERS

16

REGIONAL
HUBS

120

TRAINING SERVICE
PROVIDERS ACROSS
THE COUNTRY

2,200

WOMEN & PWD LED
ENTERPRISES
SUPPORTED

180,000

PEOPLE REACHED
THROUGH SOCIAL MEDIA

46,030

PARTICIPANTS AT
OUR EVENTS

OVER

14

PROJECTS
ORGANISED

OVERVIEW OF PROJECTS

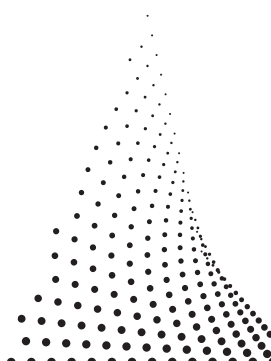
ACTIVATE

Accelerating Change Through Innovation in Agricultural TVET



SIFA
Skills Initiative
for Africa

FC
Financial Cooperation



OVERVIEW OF PROJECTS



OVERVIEW OF PROJECT ACTIVATE

ACCELERATING CHANGE THROUGH INNOVATION IN AGRICULTURAL TVET



The ACTIVATE Project, which aims to build the skills and capacities of approximately 80,000 youth, remains ongoing and is being implemented in phased cohorts to ensure effective delivery and measurable impact.

The first cohort of beneficiaries has successfully completed the training programme. Participants undertook structured capacity-building sessions focused on enhancing employability, entrepreneurship, and practical skills. Following the completion of Cohort One, an end-of-year retreat was organized for key project stakeholders and facilitators. The retreat provided an opportunity to reflect on implementation progress, assess lessons learned, and identify areas for improvement to strengthen subsequent phases of the project. In addition, curriculum development and review sessions were conducted as part of the transition into the next phase. These sessions focused on refining training content, integrating feedback from Cohort One, and aligning learning modules with the evolving needs of youth beneficiaries and labour market demands.

Cohort Two of the ACTIVATE Project is currently underway, with training activities actively ongoing. This phase continues to engage youth participants through enhanced learning modules, practical sessions, and mentorship support, informed by insights from the end-of-year retreat and curriculum development process. Further cohorts are planned as the project progresses toward achieving its overall target of reaching 20,000 youth.



Social Enterprise Ghana, in collaboration with the World University Service of Canada (WUSC), organized a seven-day Training of Trainers (ToT) workshop under the ACTIVATE Project for 80 facilitators drawn from partnering hubs and training centers across all 16 regions of Ghana. The workshop served as an upskilling initiative, providing facilitators with hands-on training in key trade areas under the project. The programme strengthened facilitators' capacity to effectively train and mentor learners, ensuring the delivery of industry-relevant, competency-based training that supports employability and entrepreneurship outcomes.



The ACTIVATE Project practicals provided participants with hands-on, industry-relevant training to complement theoretical lessons. Through guided exercises and supervised sessions, learners developed technical skills, problem-solving abilities, and workplace readiness. The practicals enhanced confidence, competency, and employability, supporting the project's goal of equipping youth with market-driven skills and promoting sustainable livelihood opportunities.



Social Enterprise Ghana, in collaboration with the World University Service of Canada (WUSC) and Akenten Appiah-Mensah University of Skills Training and Entrepreneurial Development (AAMUSTED), and with support from the Mastercard Foundation, organized a one-week Competency-Based Training (CBT) programme under the ACTIVATE Project for over 100 facilitators. The training equipped facilitators with CBT standards and methodologies, focusing on lesson planning, competency-based assessment, facilitation techniques, and practical skills delivery, to ensure the provision of high-quality, industry-relevant training for ACTIVATE Project learners.

SIFA

Skills Initiative
for Africa

FC
Financial Cooperation



AUDA-NEPAD
Africa Union Development Agency



Co-funded by
the European Union



german
cooperation
DEUTSCHE ZUSAMMENARBEITUNG

Partnered by
KFW

Overview of Project

FEMALES IN GREEN AND DIGITAL SKILLS FOR JOB AND ENTERPRISE CREATION (FEMGREEN)



During the year under review, the SIFA Project successfully implemented a series of capacity-building programmes aimed at empowering young entrepreneurs with practical and market-relevant skills. In total, approximately 180 young entrepreneurs were trained across various specialized areas, including Graphic Design, Website Design, UI/UX Design, Baking, and Python Programming. The training programmes were designed to be hands-on and participant-centered, combining theoretical instruction with practical sessions to enhance learning outcomes. Participants demonstrated a high level of enthusiasm and engagement throughout the training period, reflecting the relevance of the skills being delivered to their personal and professional aspirations. Feedback from beneficiaries indicated strong satisfaction with the quality and structure of the training. As a direct outcome of the programme, a significant number of participants have already taken steps to apply the skills acquired. Many have established their own businesses, while others are actively offering services, freelancing, or expanding existing ventures using the competencies gained through the SIFA Project. Overall, the training has contributed to increased self-employment opportunities, improved entrepreneurial confidence, and strengthened economic participation among the youth, aligning with the broader objectives of the SIFA Project to promote sustainable livelihoods and youth empowerment.



During the year under review, the SIFA Project implemented a UI/UX design training programme for a young entrepreneurs. Participants demonstrated strong interest and engagement throughout the training. Following completion, many beneficiaries have begun applying their skills by offering UI/UX design services, freelancing, or integrating the skills into their digital ventures. The training contributed to improved employability and entrepreneurial opportunities for young people under the SIFA Project.



The SIFA Project implemented a three-week baking training programme for young entrepreneurs. The training equipped participants with practical baking and food preparation skills relevant to small-scale business development. Participants were highly enthusiastic and actively engaged throughout the programme. Following the training, many beneficiaries have begun applying the skills acquired by starting or expanding baking-related businesses, contributing to improved income-generating opportunities and entrepreneurship under the SIFA Project.



During the year under review, the SIFA Project delivered a Graphic Design training programme for young entrepreneurs. The training equipped participants with practical design skills relevant to branding, digital marketing, and visual communication. Participants showed high levels of interest and engagement throughout the programme. As a result of the training, many beneficiaries have begun applying their skills professionally, with several starting their own graphic design businesses or offering freelance services.





During the reporting period, Social Enterprise Ghana, in partnership with GIZ, implemented an E-Commerce training programme aimed at strengthening the digital business capacities of young entrepreneurs. The initiative reached approximately 160 young entrepreneurs drawn from various locations, including Hohoe, Somanya, Winneba, Koforidua, and Cape Coast. The training was designed to equip participants with practical knowledge and skills in e-commerce operations, online marketing, digital payment systems, customer engagement, and the use of digital platforms to access broader markets. Sessions were delivered in an interactive and hands-on manner, enabling participants to apply concepts in real time and relate the training to their existing or planned businesses. Participants demonstrated high levels of interest and engagement throughout the training, reflecting the growing importance of digital trade for small and medium-scale enterprises.



As a result of the programme, many beneficiaries have begun exploring or strengthening their online presence, adopting e-commerce tools to promote products and services, and improving their overall business competitiveness. Overall, the partnership between Social Enterprise Ghana and GIZ significantly contributed to enhancing digital entrepreneurship among youth, supporting inclusive economic growth and improved access to market opportunities across the participating communities.



With support from SNV, Social Enterprise Ghana partnered with 2SCALE to implement a capacity-building programme focused on promoting inclusive business models. The training targeted approximately 250 business hubs and agribusinesses, with the aim of strengthening their ability to design and implement inclusive business approaches that support people at the Base of the Pyramid (BoP).

The programme focused on building participants' understanding of inclusive business principles, value chain integration, and strategies for engaging low-income producers, suppliers, and consumers in a sustainable and commercially viable manner. Training sessions emphasized practical approaches for creating shared value, improving market access, and increasing participation of smallholder farmers, women, and youth within agribusiness value chains. Participants actively engaged in the training, sharing experiences and exploring ways to adapt inclusive business practices to their respective operations. As a result, many hubs and agribusinesses gained improved capacity to develop business models that are both profitable and socially impactful, contributing to livelihood improvement and economic inclusion for vulnerable groups.

Overall, the initiative strengthened the role of hubs and agribusinesses as drivers of inclusive growth, aligning with the broader objective of supporting sustainable enterprises that contribute to poverty reduction and inclusive economic development.



Social Enterprise Ghana held a strategic meeting with representatives of the World Food Programme (WFP) to explore potential areas of collaboration aimed at strengthening food security and promoting sustainable livelihoods in Ghana. The meeting provided a platform for knowledge exchange and discussions on complementary interventions, partnership opportunities, and approaches to improving food systems and livelihood resilience, particularly among vulnerable communities.

Following these engagements, two consecutive training sessions were conducted focusing on refrigeration and food preservation. The training sessions were designed to equip participants with practical knowledge and skills to improve food storage, reduce post-harvest losses, and enhance food safety. Participants were trained on appropriate refrigeration techniques, preservation methods, and best practices for maintaining food quality and extending shelf life. Overall, the engagements and training sessions contributed to building technical capacity in food handling and preservation, supporting broader efforts to improve food security and create sustainable livelihood opportunities.

The training was facilitated by Steve Bezglasny, a refrigeration expert from Carrier Transicold, France, who provided practical insights and technical expertise on refrigeration systems, maintenance practices, and effective cold chain operations essential for food preservation and safety. Participants acquired hands-on skills in basic refrigeration principles, troubleshooting, best handling practices, and sustainable management of cold storage equipment. The training formed part of broader efforts to strengthen the cold chain sector, enhance food security, and support small businesses in improving product quality across agricultural and food value chains.

Overview of Project



STAR GHANA
FOUNDATION



With funding support from STAR Ghana Foundation, Five (5) staff members of Social Enterprise Ghana were sponsored to undertake a Project Management training programme at Wisconsin International University College, Accra. The capacity-building initiative was aimed at strengthening staff competencies in project planning, implementation, monitoring, and evaluation in line with international best practices.

The training enhanced the team's ability to manage complex development projects efficiently, improve accountability and reporting standards, and ensure timely and results-oriented delivery of organisational programmes. The skills acquired are already contributing to improved project coordination, effective resource utilisation, and overall institutional performance of Social Enterprise Ghana.

Also, STAR Ghana Foundation supported Social Enterprise Ghana organised a series of in-house capacity-building trainings focused on Gender Equality and Social Inclusion (GESI) and Intercultural Competence. The trainings were designed to deepen staff understanding of inclusive development approaches, promote respect for diversity, and strengthen the organisation's ability to design and implement programmes that are equitable, culturally sensitive, and responsive to the needs of diverse stakeholder groups.



With support from STAR Ghana Foundation, the Executive Director participated in several international conferences and knowledge exchange programmes. These engagements provided strategic platforms for learning, peer-to-peer exchange, and exposure to global best practices in development programming, governance, and social innovation. The knowledge and insights gained from these international engagements strengthened institutional leadership, informed programme design and implementation, and enhanced the organizations capacity to build effective partnerships and scale impact at the national and regional levels.

GHANA

SOCIAL ENTERPRISE FORUM 2025



The 2025 Forum was sponsored by Star Ghana Foundation and it was successfully organized and it recorded a high level of participation, reflecting strong interest and engagement from stakeholders across the social enterprise ecosystem. The event was well structured, with effective coordination of sessions, speakers, and participant interactions, contributing to its overall success.

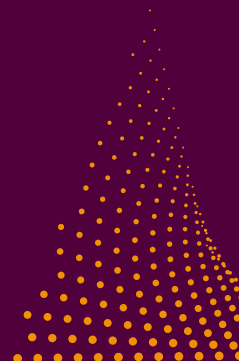
The forum was well received by participants, who expressed satisfaction with the quality of discussions, networking opportunities, and knowledge-sharing sessions. Feedback indicated that the forum provided a valuable platform for learning, collaboration, and exchange of ideas among social entrepreneurs, partners, and supporters.

In addition, the forum served as a key platform for the Social Enterprise Ghana membership drive, which was initiated and spearheaded by Yolande Charles and Rebecca Owusu. As a result of this targeted effort, a significant number of new members were admitted into the Social Enterprise Ghana network. This growth in membership strengthened the organization's community, expanded its reach, and enhanced opportunities for collaboration and collective advocacy within the sector.

Overall, the successful organization of the 2025 Forum and the effective membership drive contributed positively to the visibility, growth, and impact of Social Enterprise Ghana.

The 2025 Forum was successfully convened, attracting robust participation from stakeholders across the social enterprise ecosystem. The event was highly regarded, with participants commending the quality of presentations, discussions, and networking opportunities.

THANK YOU TO STAR GHANA FOUNDATION



PARTNER VISITS



Social Enterprise Ghana welcomed Mr. Sam Landon, the Global Director of Programmes at the World University Service of Canada (WUSC), along with Mrs. Appiah Wiafe-Adofo, the Acting Country Director of WUSC Ghana, for a strategic meeting targeted at deepening collaboration between the two organizations.



Social Enterprise Ghana hosted representatives from various partner organisations including Star Ghana Foundation WACSI, 2SCALE, BOPinc, Zenith Bank, and Member of Parliament for Sefwi Wiawso Honourable Kofi Bentil for discussions on how to further strengthen our partnerships and promote support to social enterprises across the country.



Social Enterprise Ghana embarked on courtesy call to key institutions, including the Ghana Investment Promotion Centre, the Public Procurement Authority (PPA) and Graphic Communications to further strengthen our working relationship with strategic partners. The Executive Director of Social Enterprise Ghana was accompanied by the Private Sector Engagement Manager, Partnerships Advisor and Business Development Assistant.



Social Enterprise Ghana undertook courtesy visits to key institutions, including the Ghana Investment Promotion Centre (GIPC), the Public Procurement Authority (PPA), and Graphic Communications, with the objective of strengthening existing working relationships and exploring opportunities for deeper collaboration with strategic partners. The visits were led by the Executive Director of Social Enterprise Ghana, accompanied by the Private Sector Engagement Manager, Partnerships Advisor, and Business Development Assistant.



Social Enterprise Ghana, in collaboration with the Amahoro Coalition, organized a Breakfast and Networking Meeting at the Mövenpick Hotel, bringing together key stakeholders, entrepreneurs, and thought leaders to discuss the inclusion of displaced persons in business and the workplace. The event provided a platform for knowledge exchange, collaboration, and networking, fostering partnerships and reinforcing collective action toward inclusive and impact-driven business growth within the social enterprise ecosystem.



Social Enterprise Ghana embarked on courtesy call to key institutions, including the Ghana Investment Promotion Centre, the Public Procurement Authority (PPA) and Graphic Communications to further strengthen our working relationship with strategic partners. The Executive Director of Social Enterprise Ghana was accompanied by the Private Sector Engagement Manager, Partnerships Advisor and Business Development Assistant.

THANK YOU TO OUR PARTNERS



THANK YOU TO OUR HUBS



FOR ENQUIRIES: 0552232227 / 0302452220
EMAIL: INFO@SEGHANA.NET
FACEBOOK: SOCIAL ENTERPRISE GHANA
TWITTER: SE GHANA
LINKED-IN: SOCIAL ENTERPRISE GHANA
INSTAGRAM: SOCIAENTERPRISEGHANA
GOOGLE: SE GHANA
WEBSITE: SEGHANA.NET